

MANY GENERATIONS COMMUNITY HOUSE

Community House and Accessible Housing in Lauttasaari

Diploma Project by Laura Nenonen



SOTERA



A”
Aalto University

LAUTTASAARI SERVICE NET RESEARCH

Aalto University:

ARTS, Department of Architecture

ARTS, Department of Design

BIZ, Department of Marketing

Partners:

City of Helsinki Department of Social Services and Health Care

City of Helsinki Economic Development

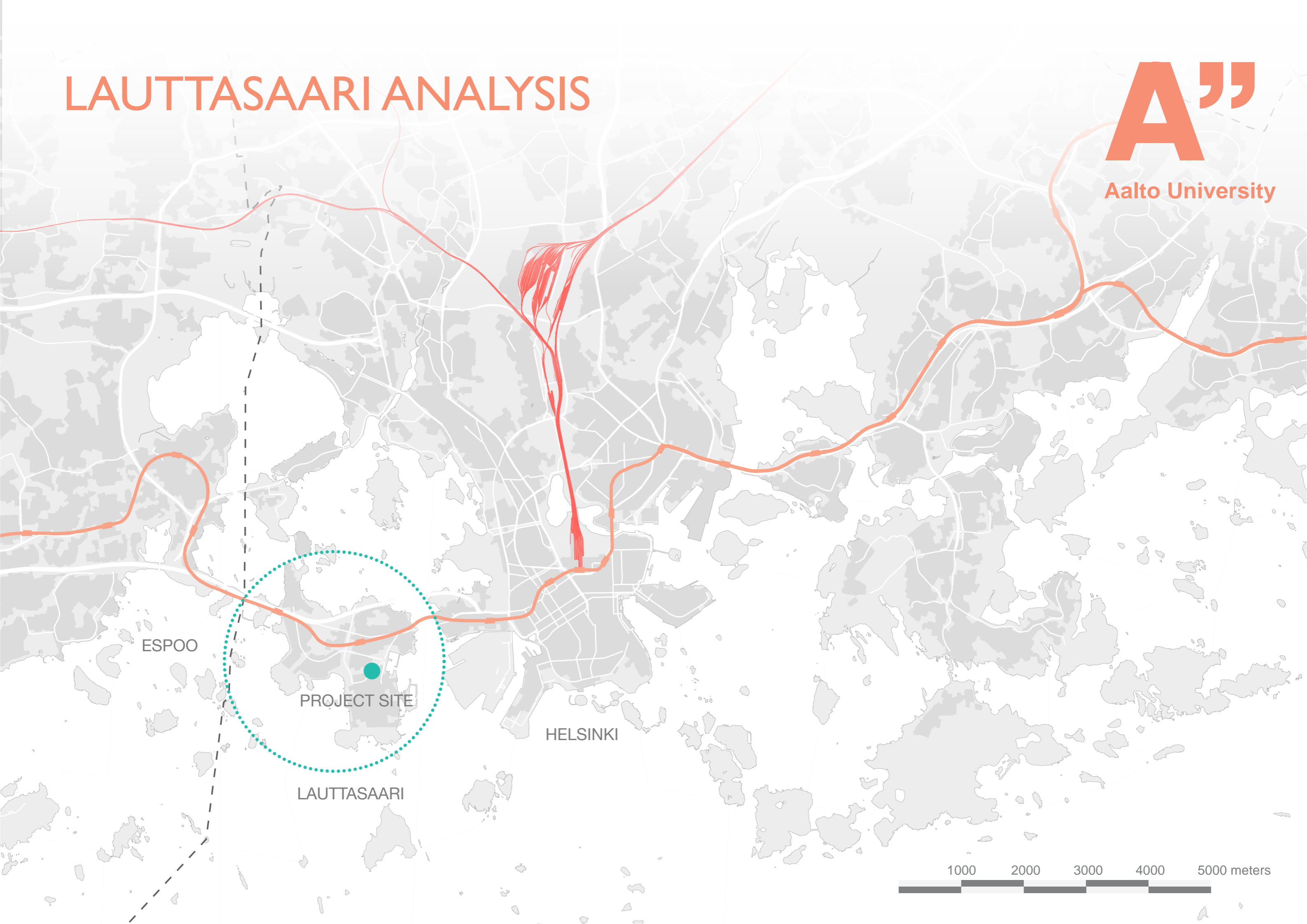
Innovative City® Partnership Programme

LAUTTASAARI CASE STUDY

Ministry of Social Affairs and Health in Finland aim:

- 92% of the population aged over 75 to live in their own homes by 2030 (2011 the percent was 89,6%)
- Accessible local service structure promoting independent coping
- Research tries to encourage collaboration between private, public and third sector services locally
- The aim of the project is a Service Center Without Walls, which operates on the whole area of Lauttasaari helping residents living in their own homes

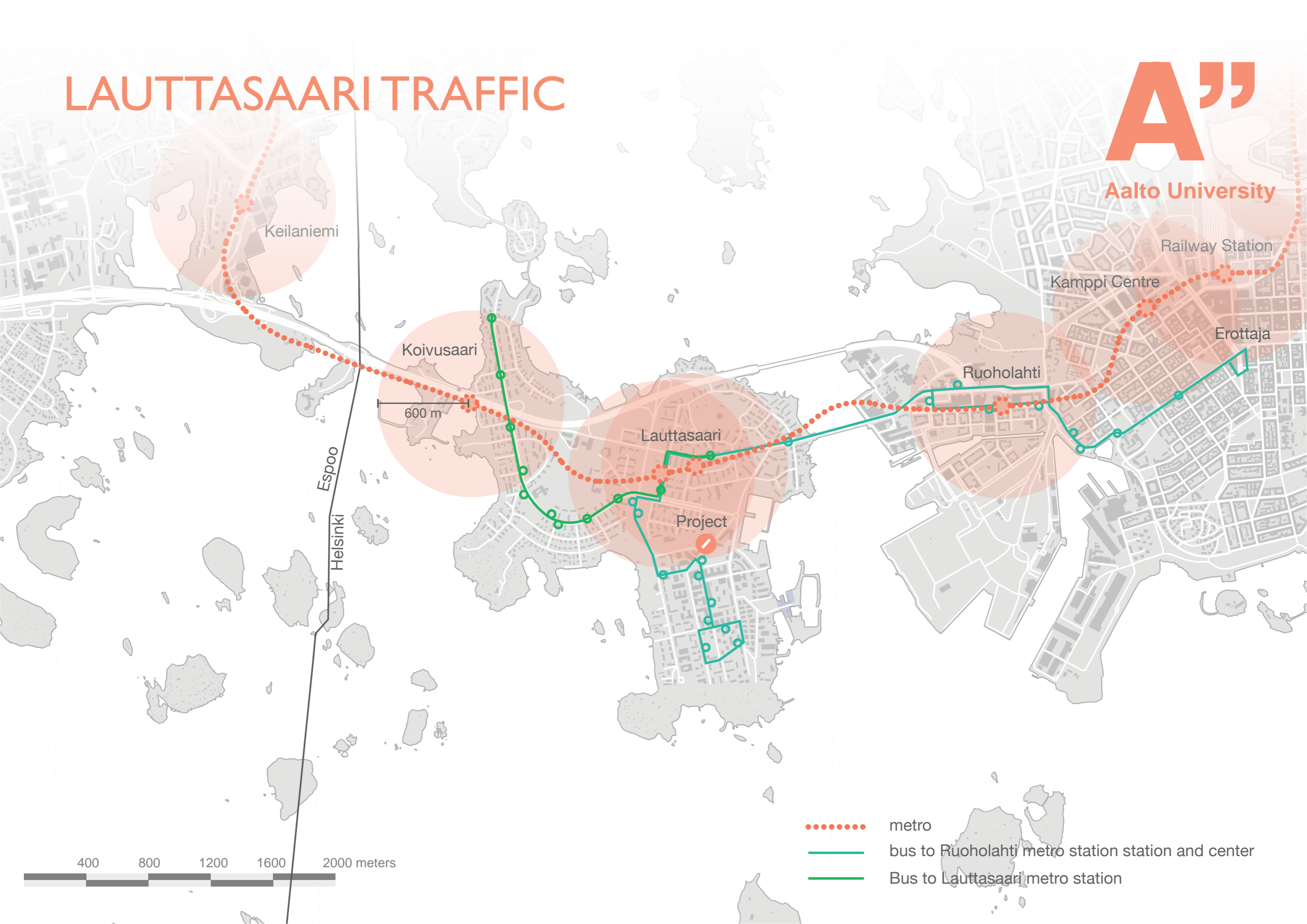
LAUTTASAARI ANALYSIS



LAUTTASAARI TRAFFIC



Aalto University



metro



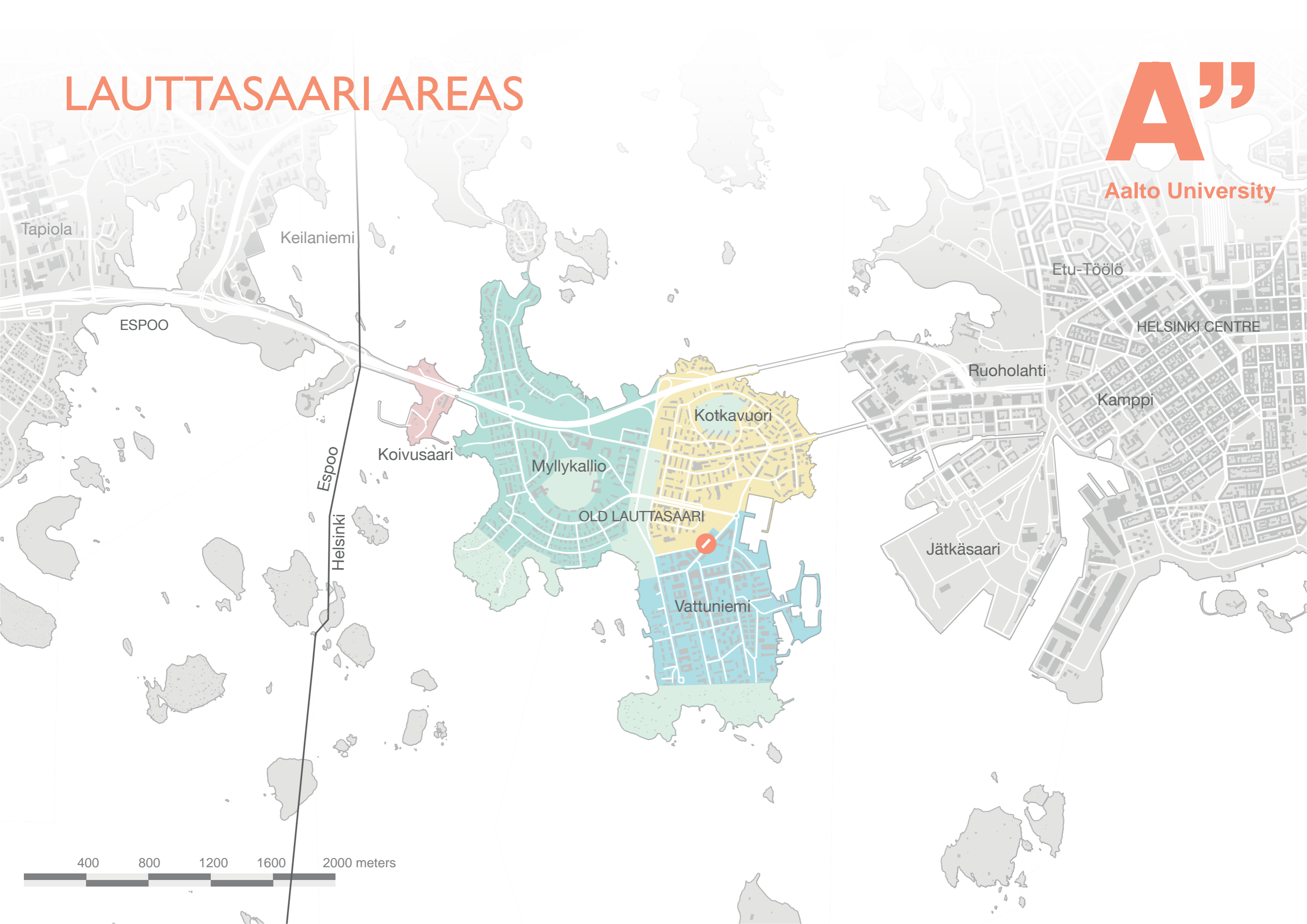
bus to Ruoholahti metro station station and center



Bus to Lauttasaari metro station

400 800 1200 1600 2000 meters

LAUTTASAARI AREAS

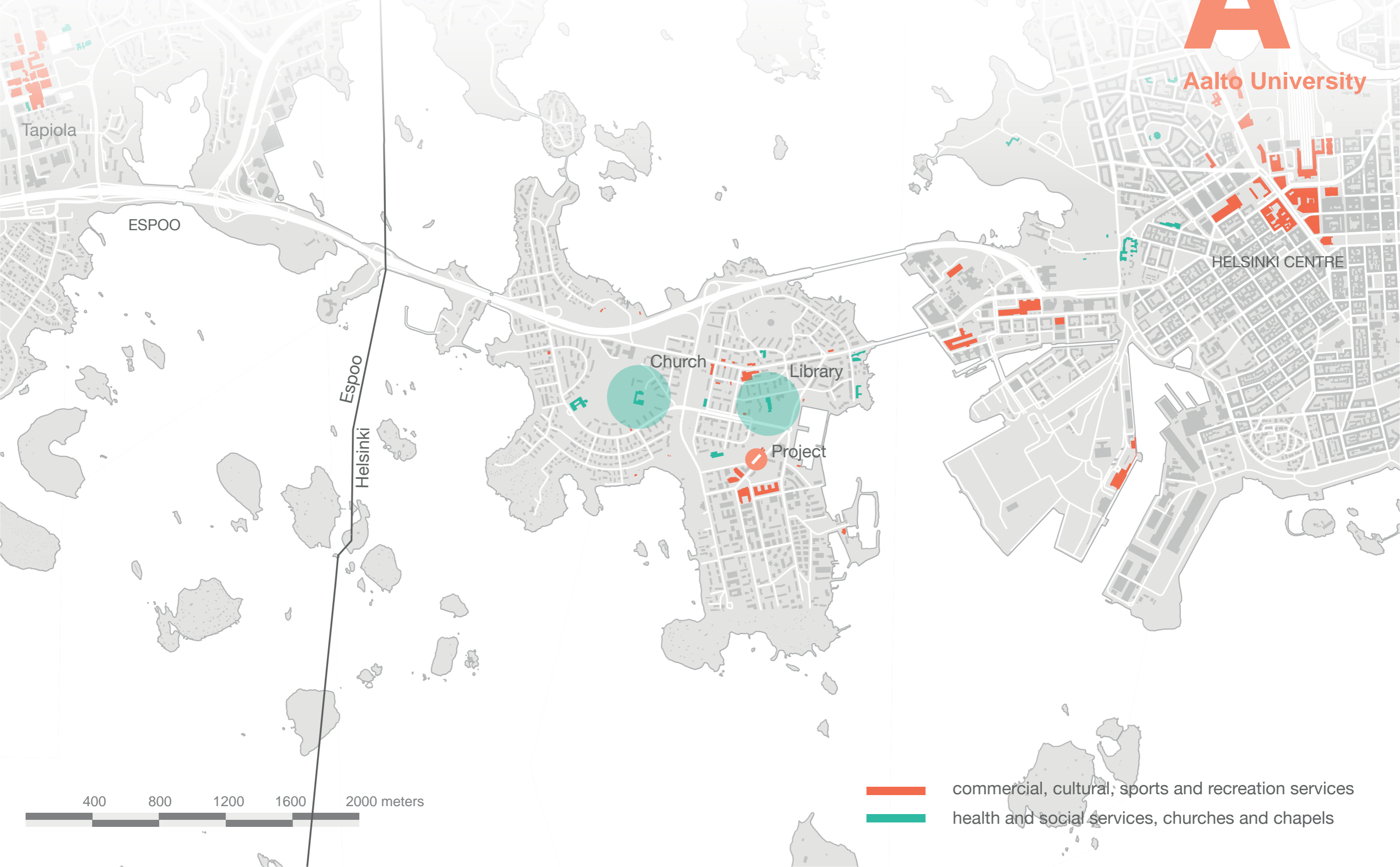


400 800 1200 1600 2000 meters

LAUTTASAARI SERVICES



Aalto University

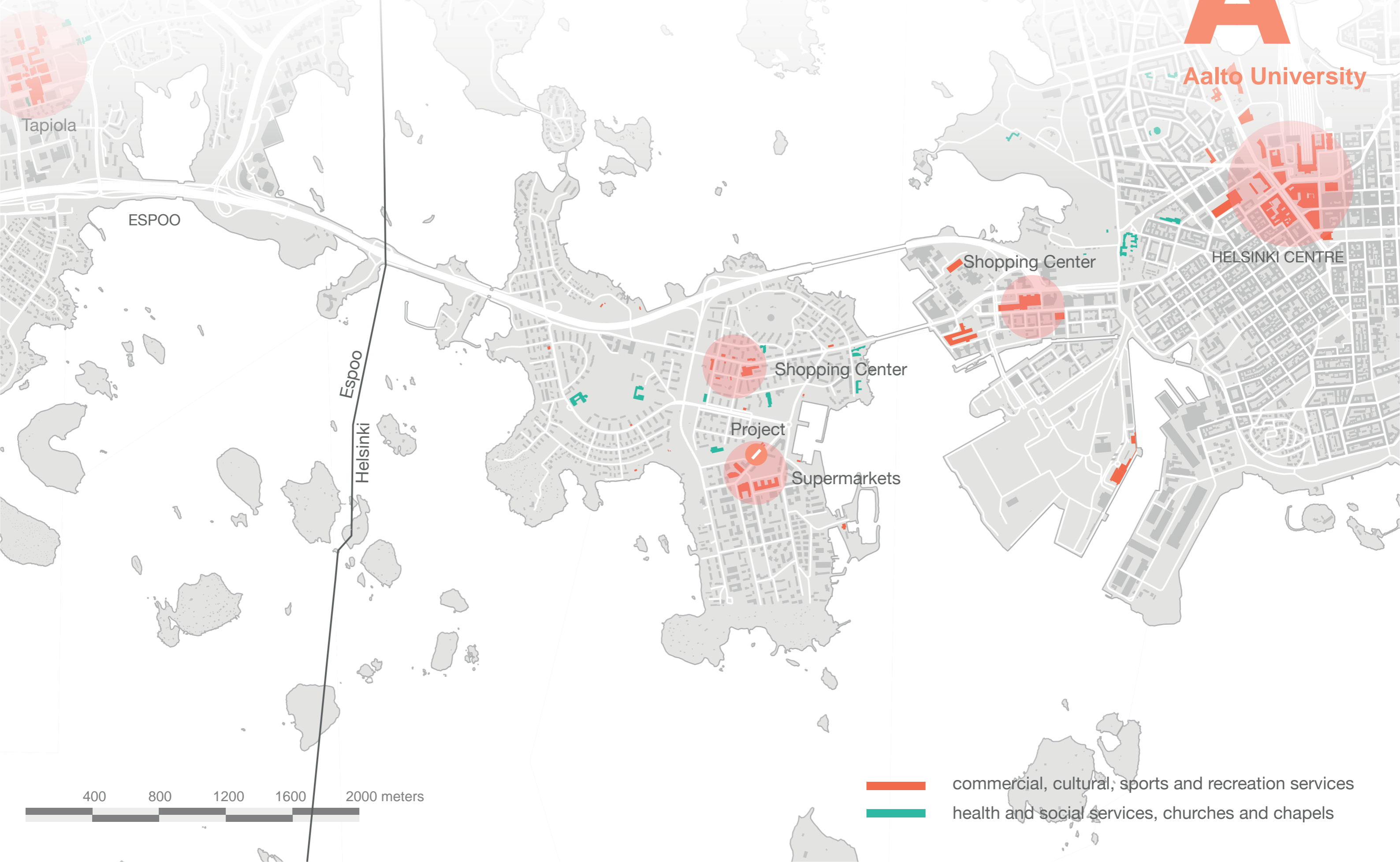




-  commercial, cultural, sports and recreation services
-  health and social services, churches and chapels

LAUTTASAARI SERVICES

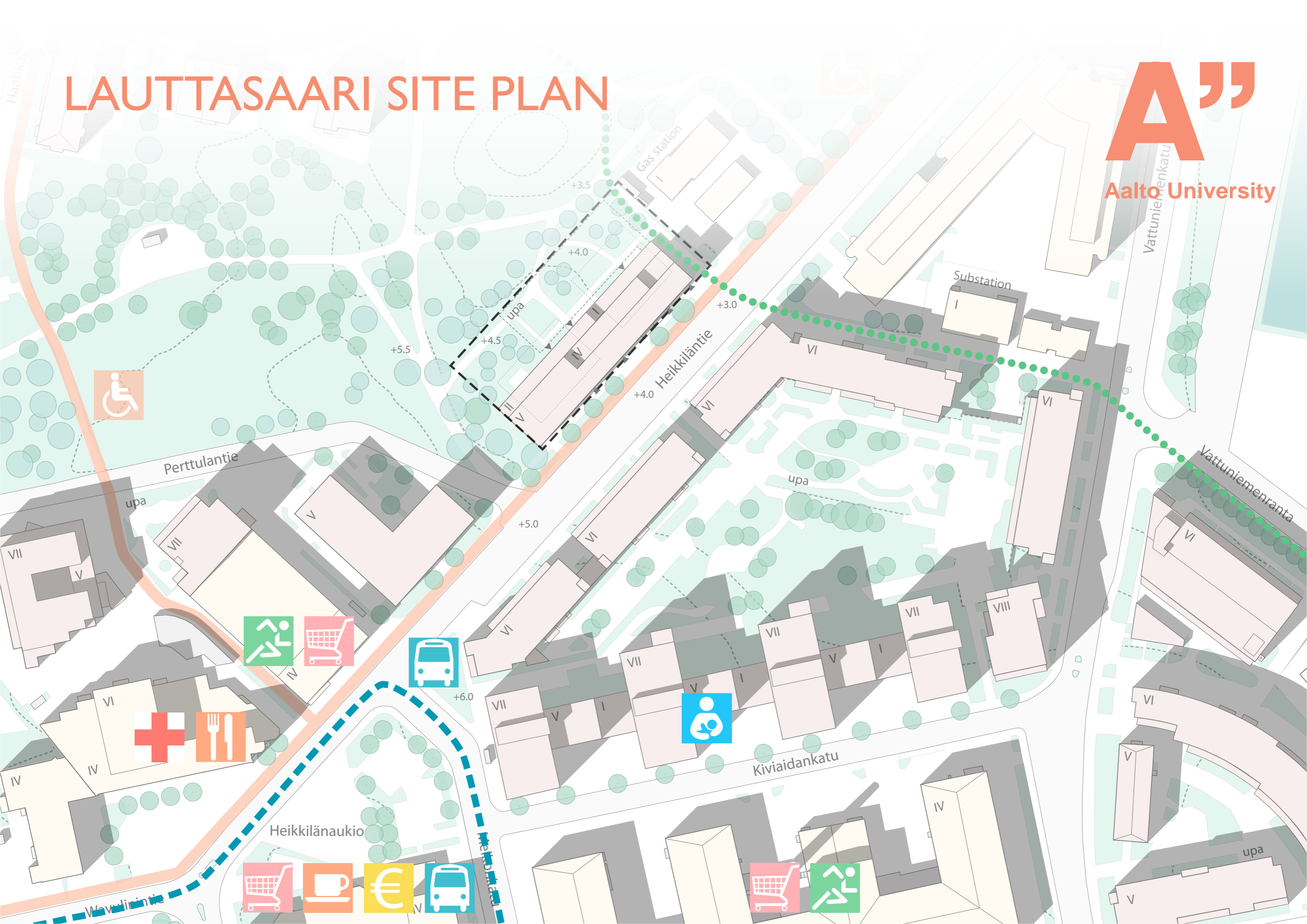


Aalto University



-  commercial, cultural, sports and recreation services
-  health and social services, churches and chapels

LAUTTASAARI SITE PLAN



WORKSHOP: WHAT I WOULD WANT IN THE MANY GENERATIONS HOUSE

Restaurant
Parking
Small shops
Caretaker
Homesharing
Plants
Swimming together
Rollator parking
Beautiful beach
Private Homecare
Agora
Fixed benches
Joint activities

Synergy between other
sheltered housing
Rest of the life in
Lauttasaari
Cafe
Common living room
Customers of various ages
Garden
Catering
Cleaning
Care
Living in the same home
until the very end

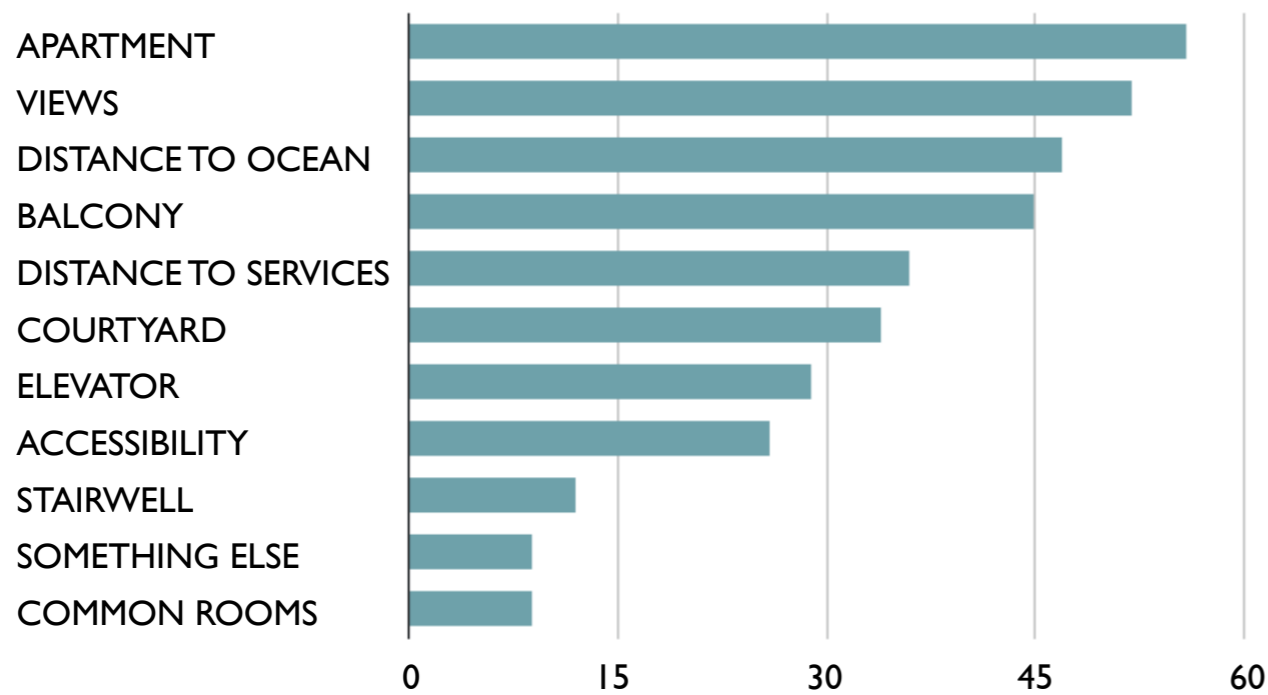
I DON'T WANT

Dark corridors
Risks of living at home:
falling
Loneliness
Charges for those of
low-income
Poor construction
Information based on
computers
No vegetation

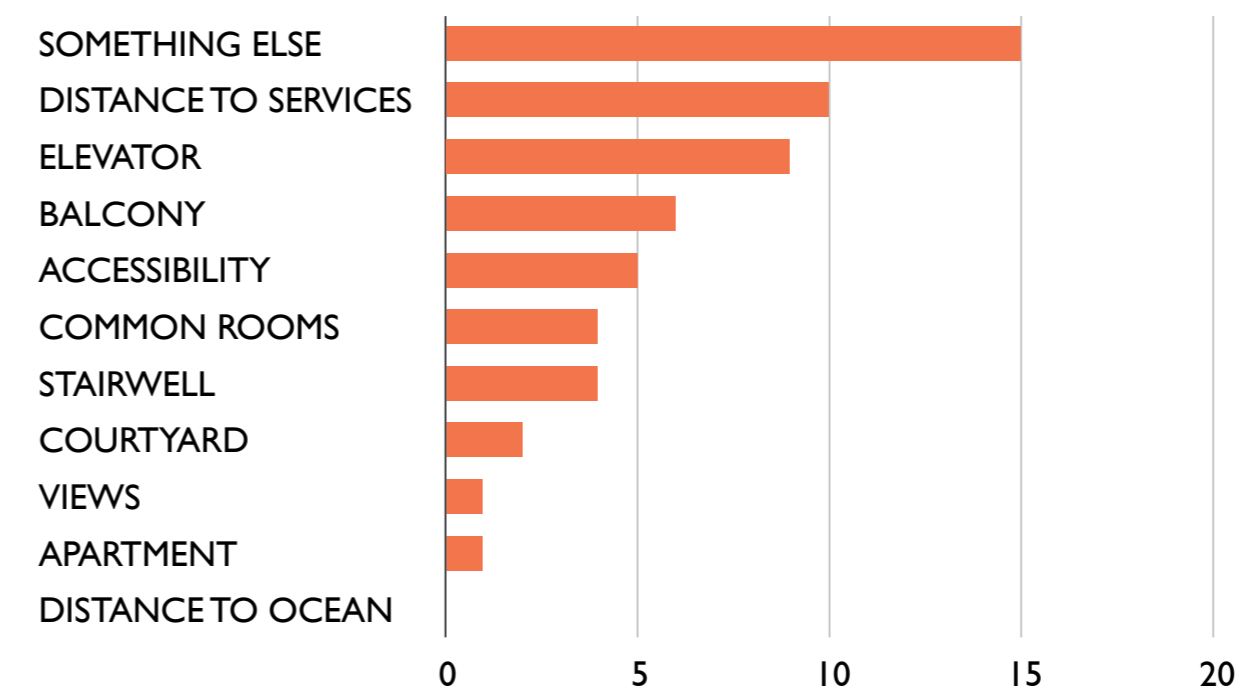
QUESTIONNAIRE FOR THE RESIDENTS OF LAUTTASAARI AGED OVER 65-YEARS



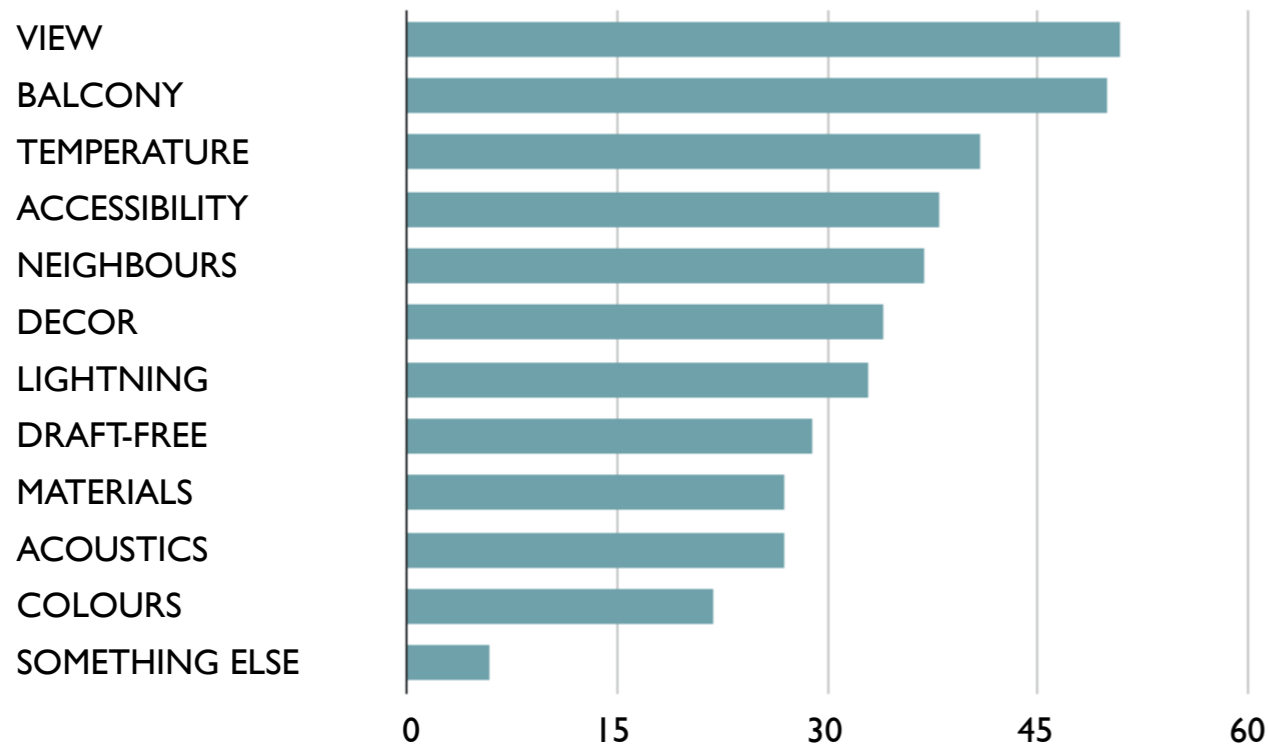
THE BEST QUALITIES IN MY APARTMENT BUILDING



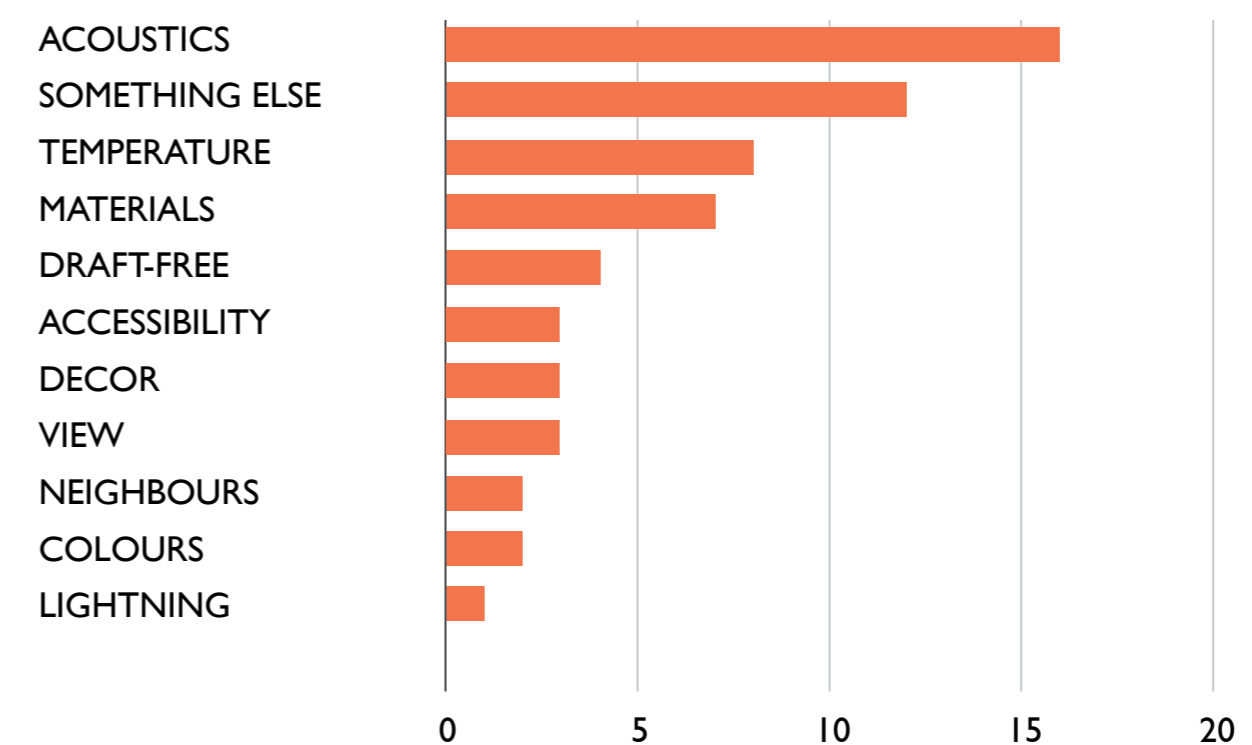
THE WORST QUALITIES IN MY APARTMENT BUILDING



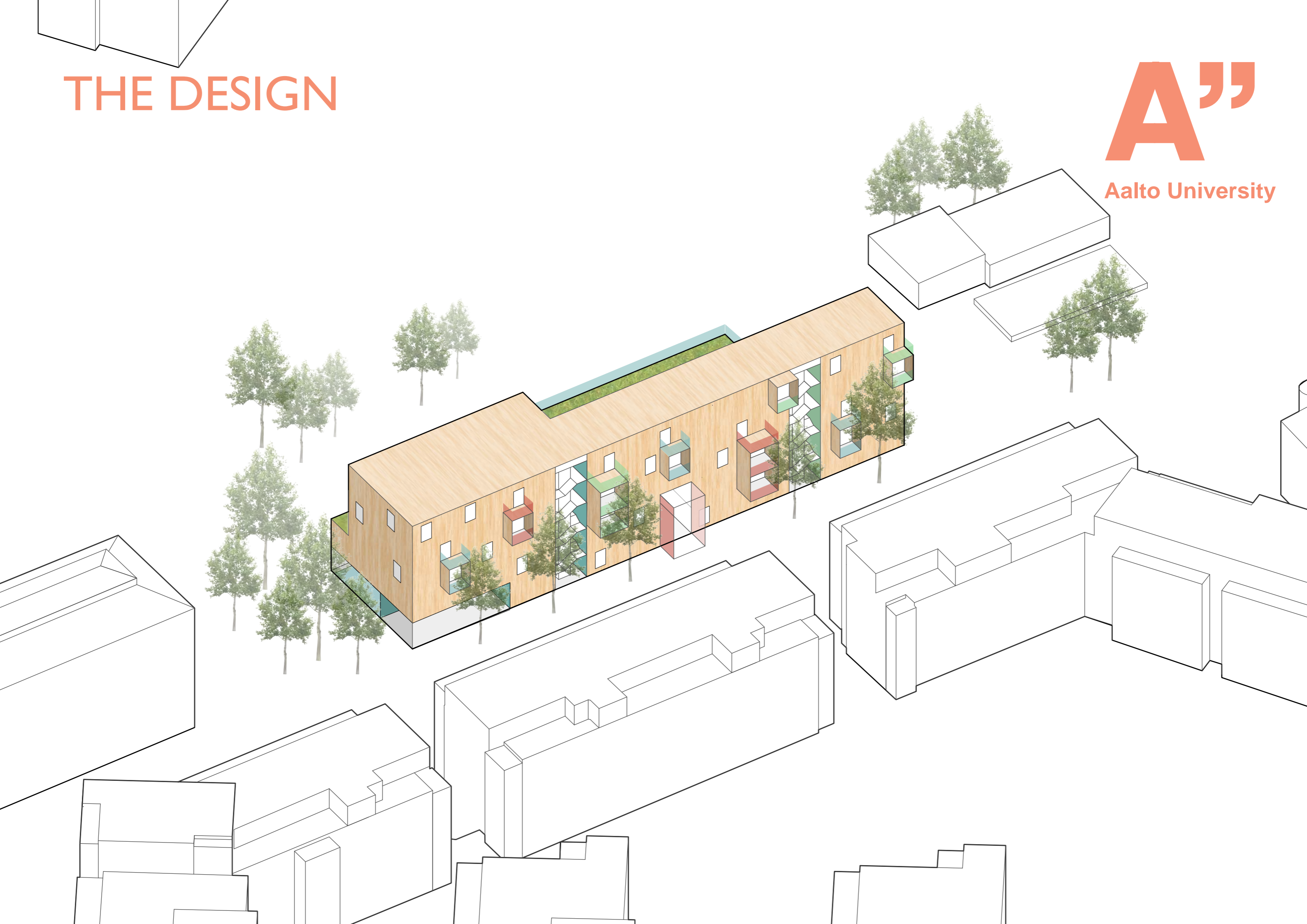
THE BEST QUALITIES IN MY APARTMENT



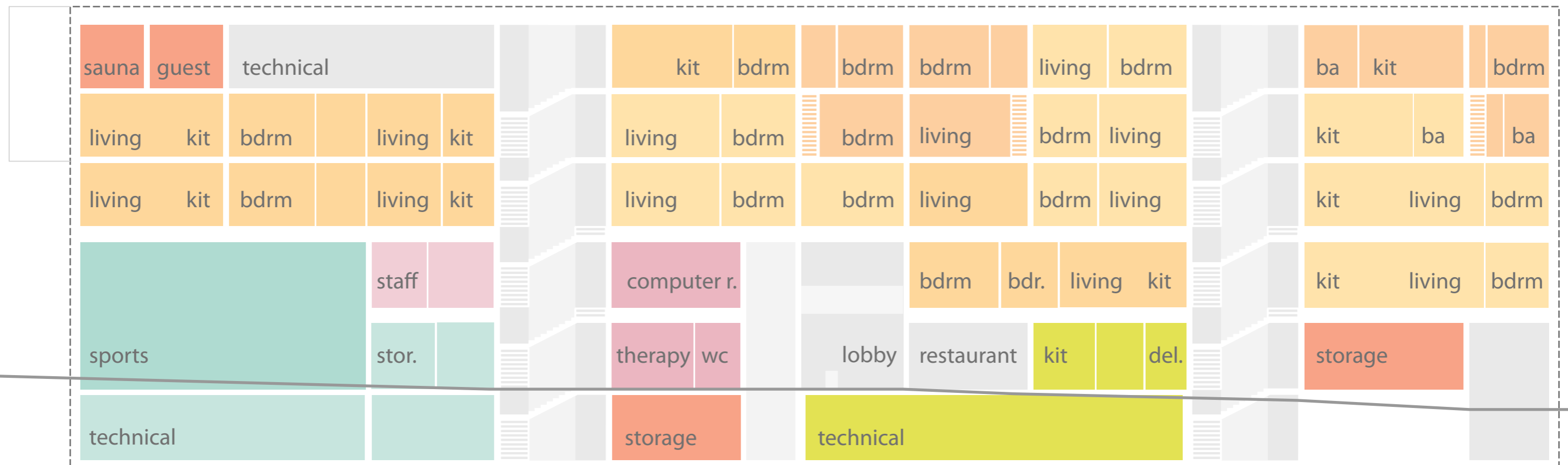
THE WORST QUALITIES IN MY APARTMENT



THE DESIGN



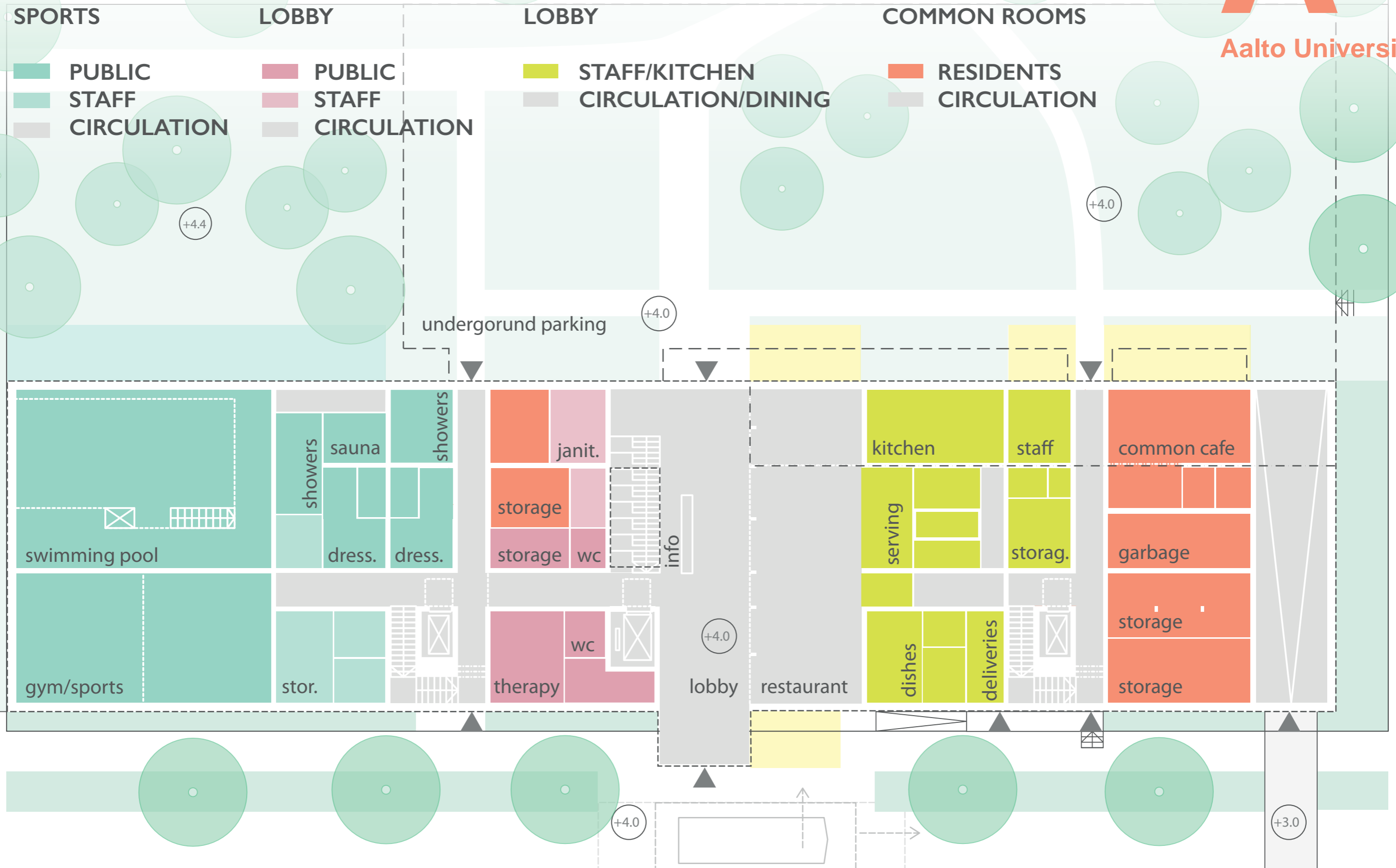
SECTION OF THE ROOM PROGRAM



GROUND FLOOR



Aalto University

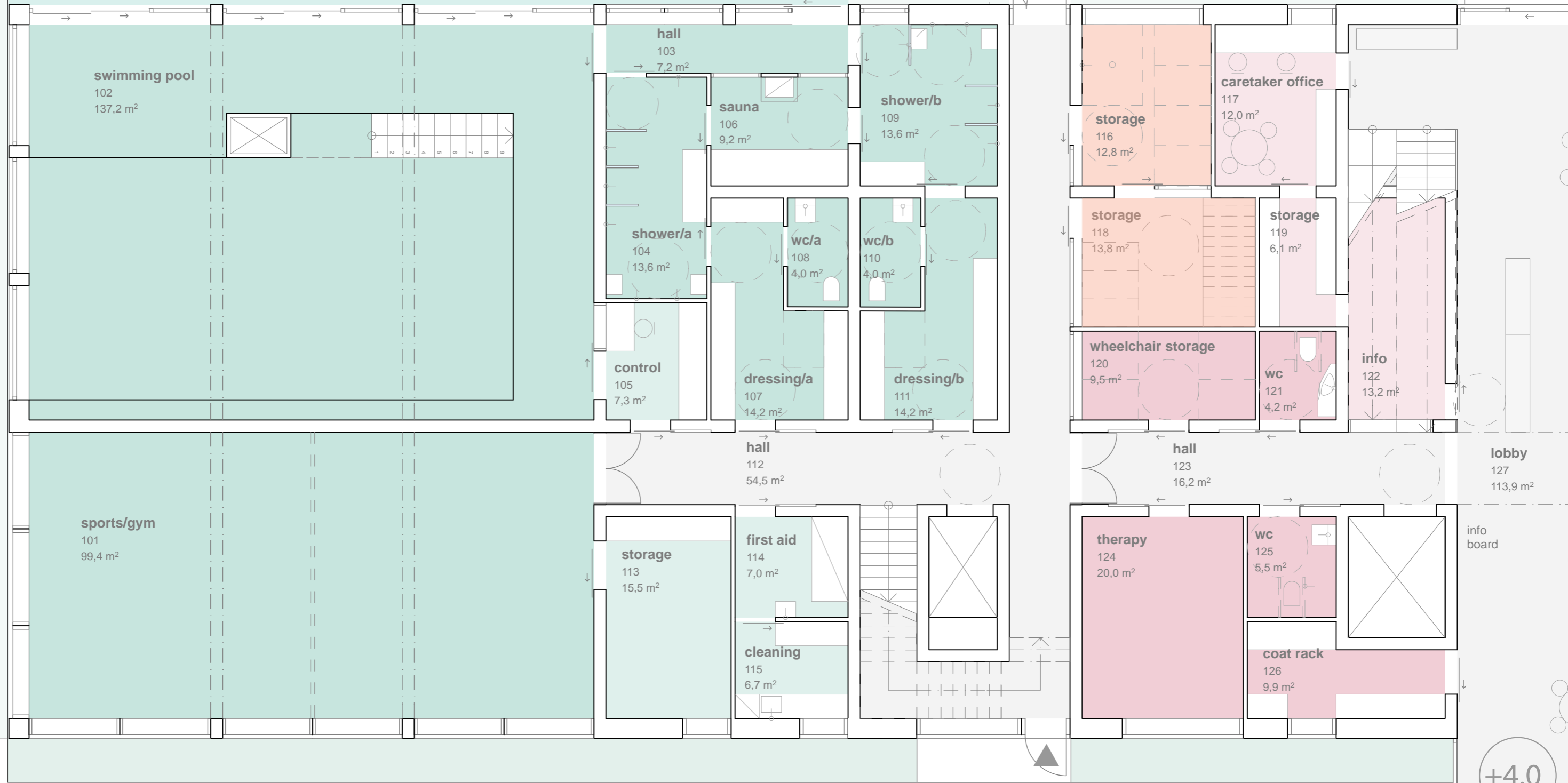


GROUND FLOOR, SPORTS AND LOBBY

A''

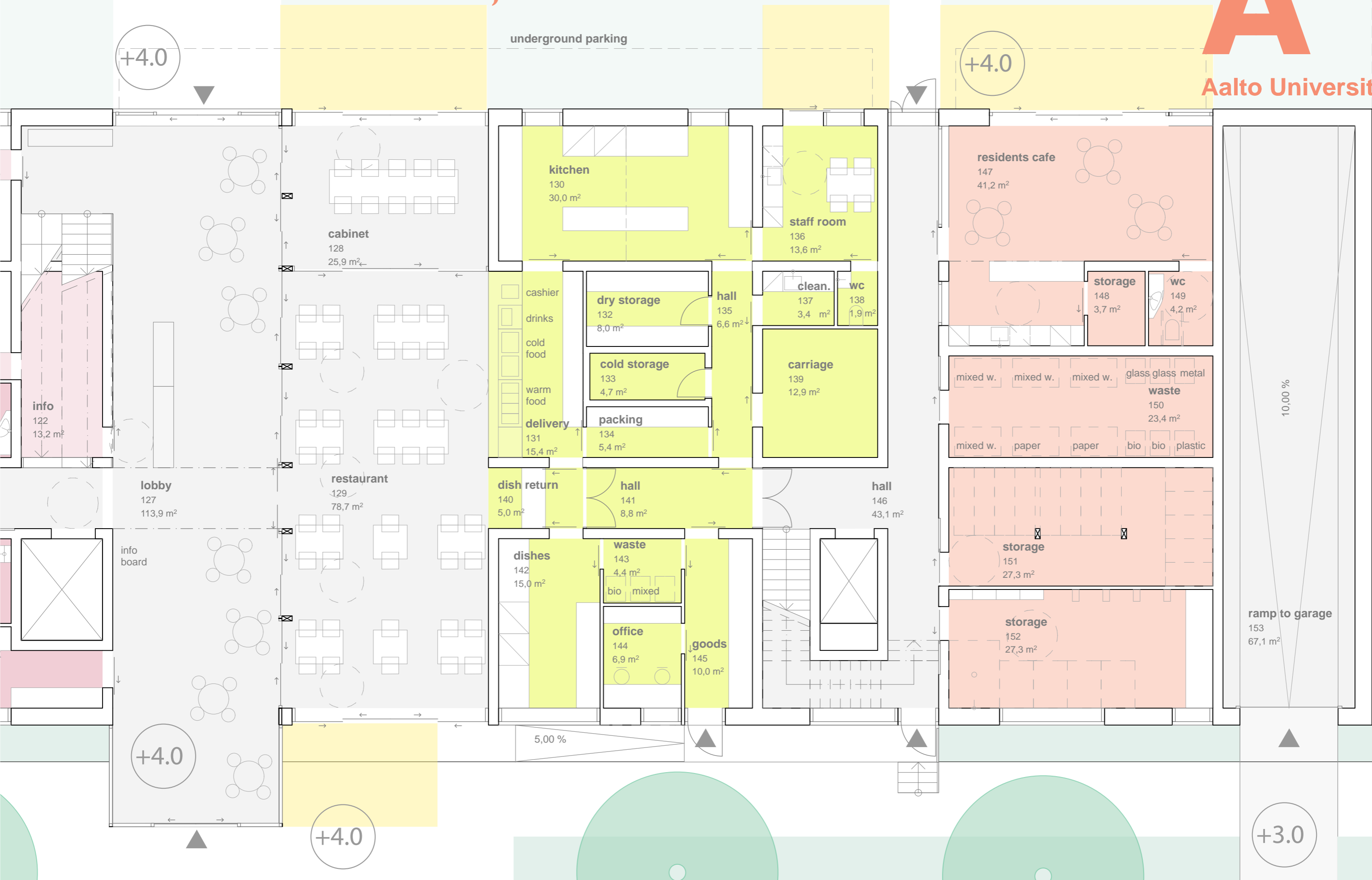
+4.0

Aalto University



+4.0

GROUND FLOOR, KITCHEN



FIRST FLOOR



Aalto University

HOBBY ROOMS

- PUBLIC
- STAFF
- CIRCULATION

APARTMENTS

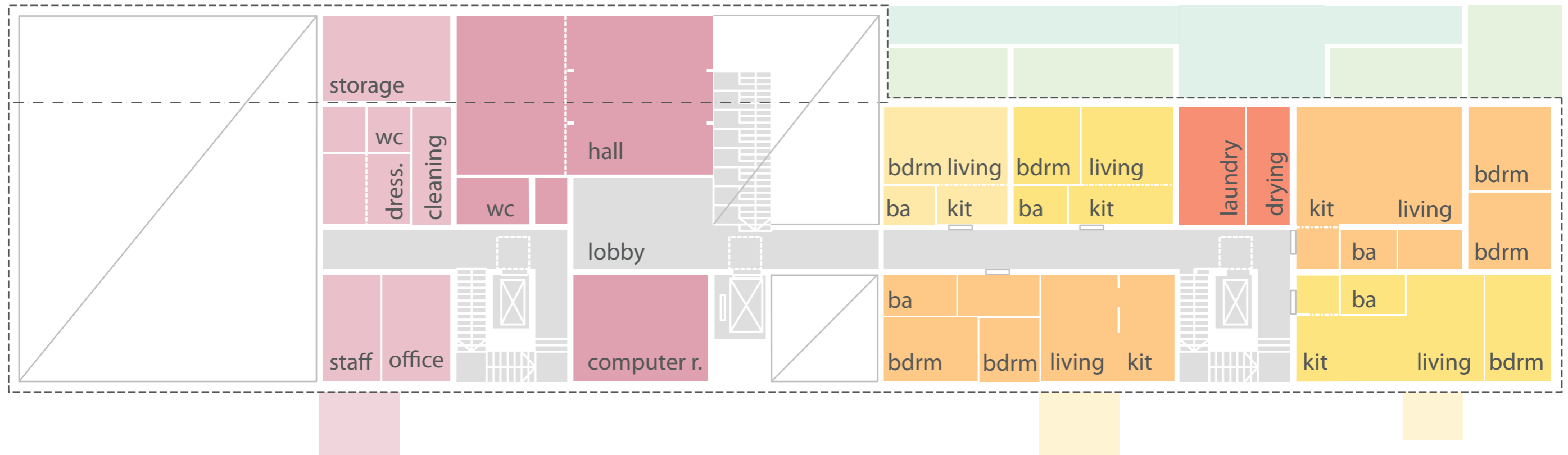
- STUDIO
- ONE BEDROOM
- TWO BEDROOMS

APARTMENTS

- COMMON ROOMS
- CIRCULATION

OUTDOOR

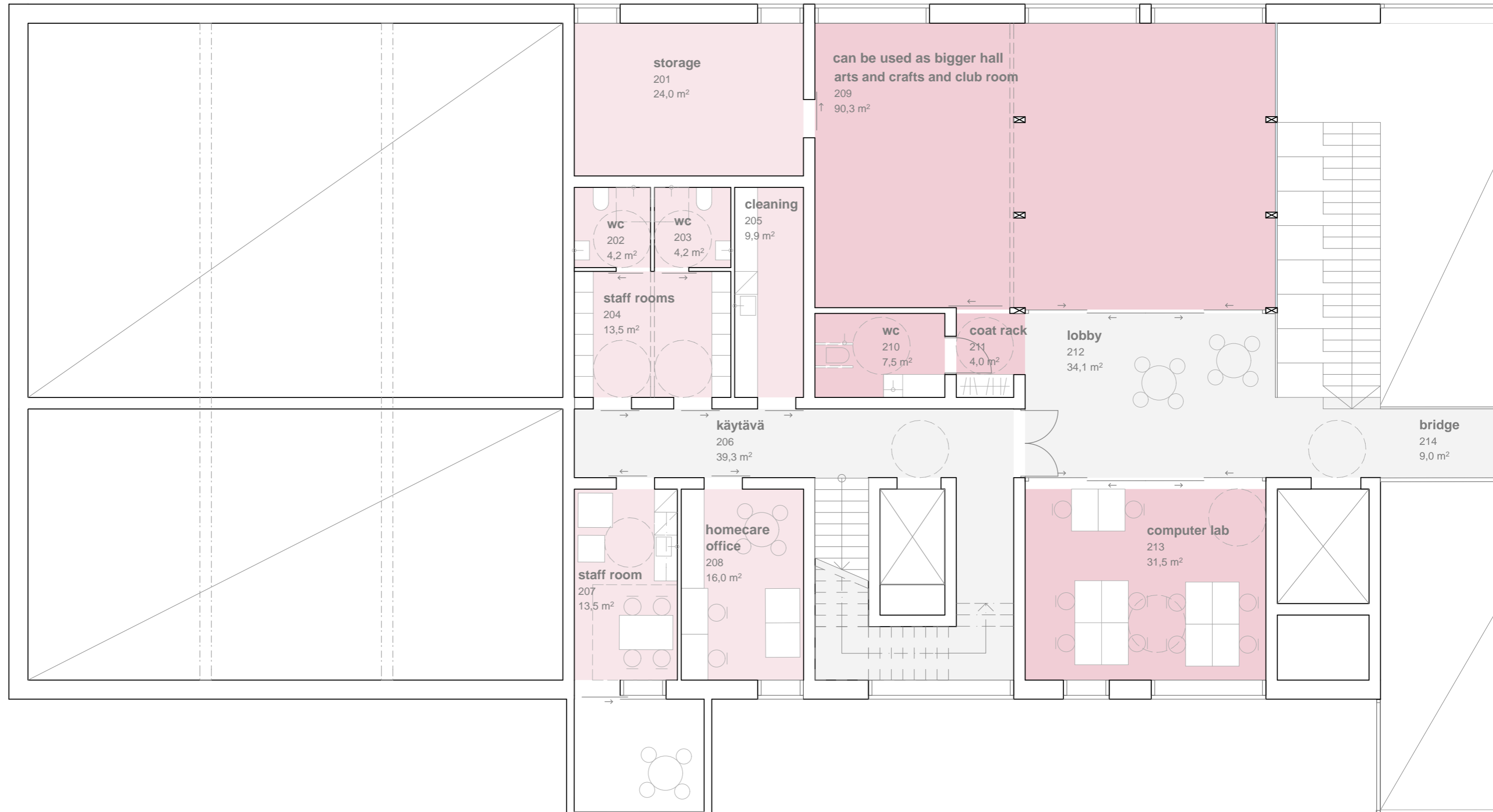
- PRIVATE
- COMMON



FIRST FLOOR, HOBBY ROOMS



Aalto University



SECOND FLOOR



Aalto University

HOBBY ROOMS

- PUBLIC
- STAFF
- CIRCULATION

APARTMENTS

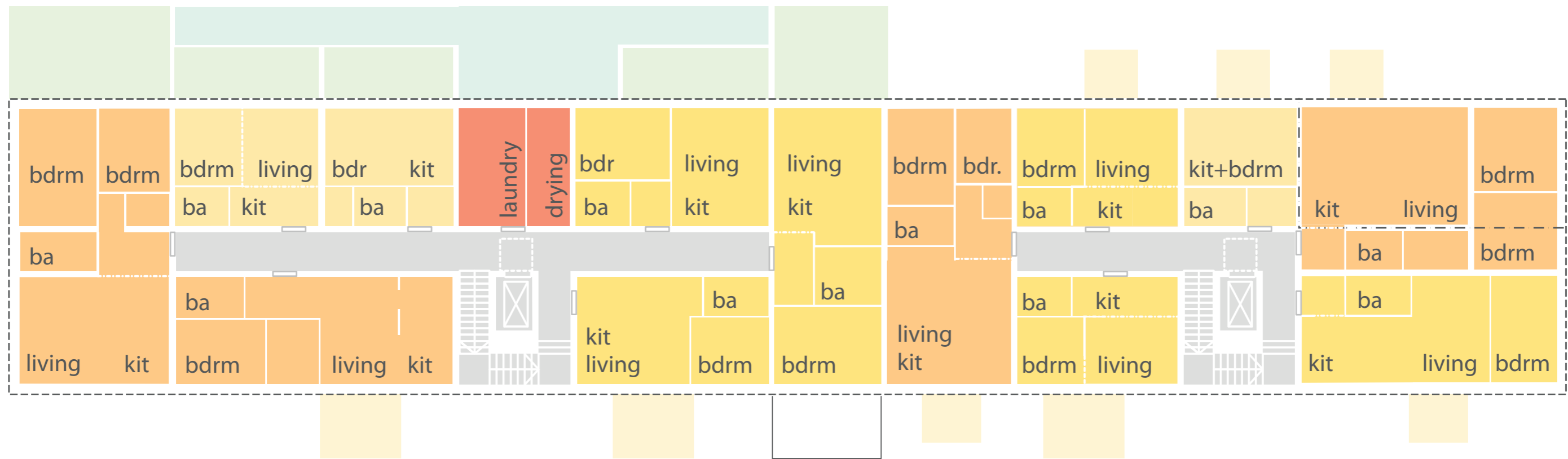
- STUDIO
- ONE BEDROOM
- TWO BEDROOMS

APARTMENTS

- COMMON ROOMS
- CIRCULATION

OUTDOOR

- PRIVATE
- COMMON



SECOND FLOOR, APARTMENTS



Aalto University



SECOND FLOOR, APARTMENTS



Aalto University



THIRD FLOOR, TWO STOREY APARTMENTS



Aalto University



FOURTH FLOOR, TWO STOREY APARTMENTS



Aalto University



FOURTH FLOOR, COMMON SAUNA



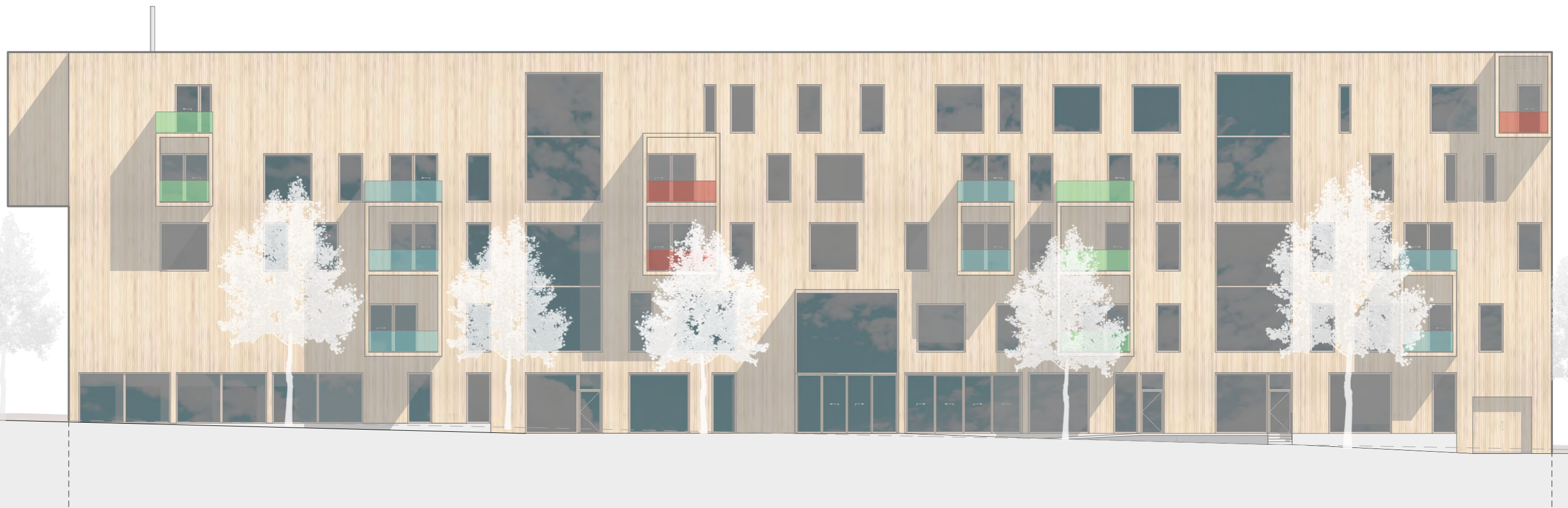
Aalto University



ELEVATION TOWARDS THE ROAD



Aalto University



ELEVATION TOWARDS THE PARK



VISUALISATION FROM THE STREET



VISUALISATION FROM THE LOBBY

